

STC-AR0233C-5200-G2A

Supertek 2MP GMSL2 Camera Module



SPECIFICATION

Sensor	ONSEMI 2.6MP AR0233 RGGB
ISP	GW5200
Image Size	1/2.5 inch CMOS
Output Pixels	1920H*1080V
Pixel Size	3.0um*3.0um
Frame Rate	1920*1080@30fps
HDR Support	Yes
Output data	YUV422@8bit
Serializer	MAXIM MAX9295A
Camera Interface	GMSL2
Power Supply	9-16V POC
Current	<250mA@12VDC
Connector	Amphenol Fakra (Z Code)
Operating temp.range	-40~+85°C
LFM	Yes
Dimension	W: 30mm, L:30mm, H:22.5mm
Weight	<50g

For more information relating to cameras, please send us email via sales@supertekmodule.com, or visit our website www.supertekmodule.com

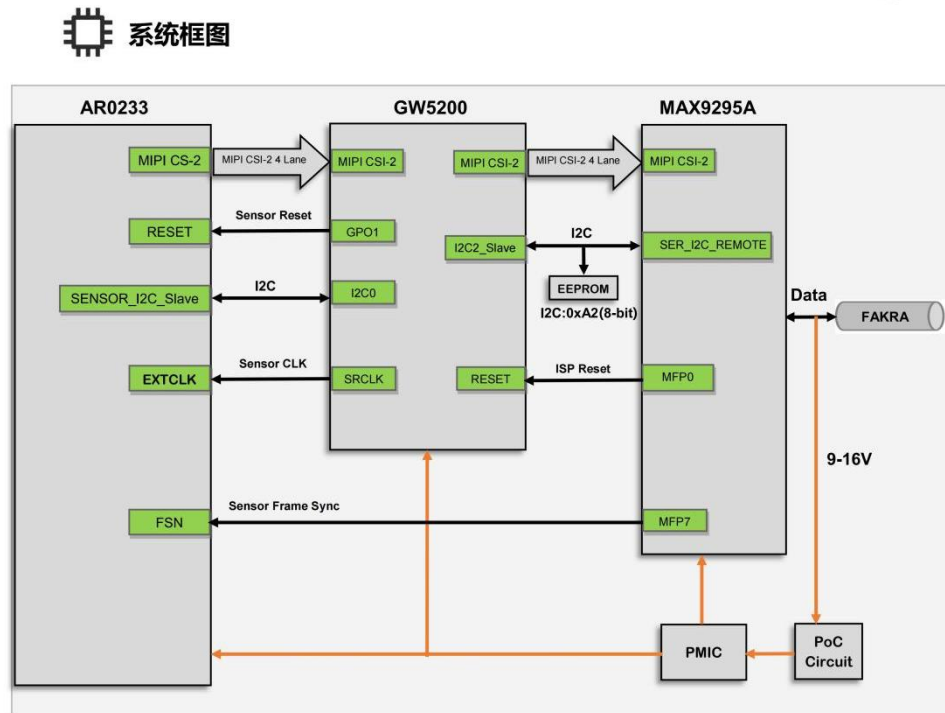
Model and Lens							
Model	HFOV	VFOV	F.No	EFL	Waterproof	Max Optical Distortion	Process specification
STC--AR0233C -H60FA	60°	17°	1.6	5.8mm	IP67	-21.5%	AA
STC--AR0233C --H100F1A	100°	33°	1.8	3.55mm	IP67	-45%	AA
STC--AR0233C -H120UA	118.4°	66°	1.6	3.04mm	IP67	-62%	AA
STC--AR0233C -H190XA	196°	112°	2.0	1.51mm	IP67	-155%	AA

Serializer	
Model	Max9295A
I2C Address	0x80 (8bit address)
Rate	GMSL2 (6G bps)
ISP	
Model	GW5200
I2C Address	0xDA (8bit address)
Reset	Controlled by Max9295A MFP0
Sensor	
Model	AR0233
I2C Address	0x20 (8bit address)
Frame Sync	Controlled by Max9295A MFP7

Features

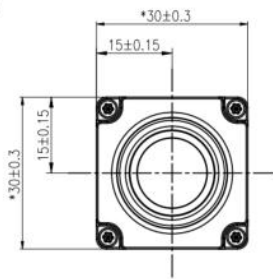
1. Output format: Uncompressed YUV422 format
2. Vehicle Protection Registration
3. Support external triggering
4. Multi Camera Synchronization
5. Support lenses with different focal lengths
6. FCC, CE, and RoHS certifications

Block Diagram

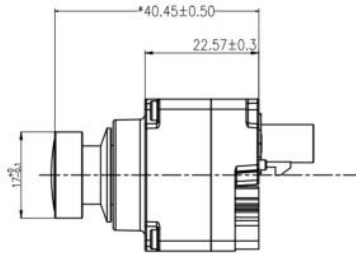


系统框图

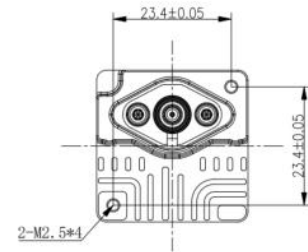
PRODUCT DIMENSION



Front View



Side View



Rear View

Note:



1. This icon indicates the imaging direction is positive.