

ST-IMX179-MIPI

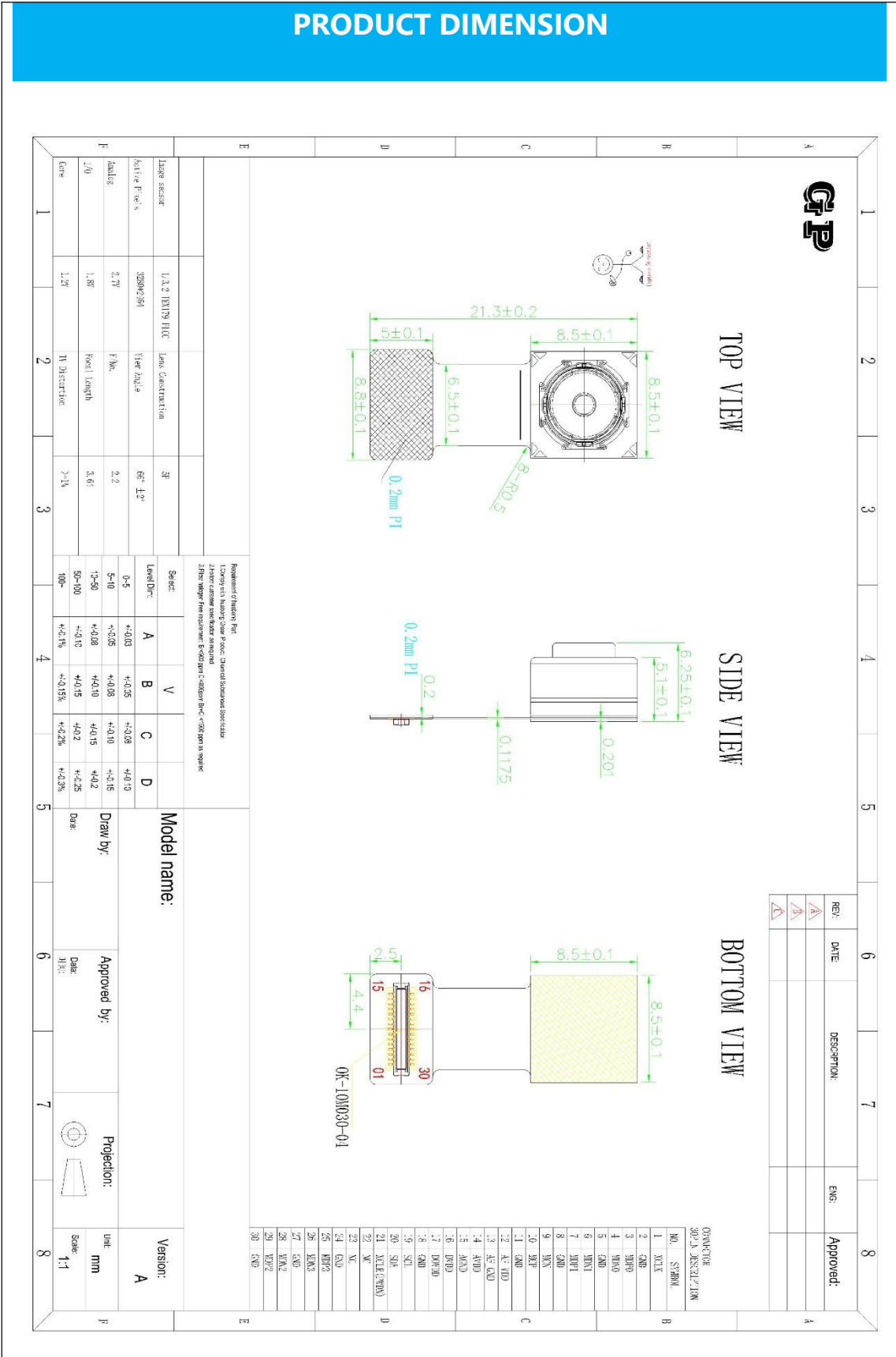
Supertek 8MP MIPI Camera Module



SPECIFICATION

Image Sensor	1/3.2" IMX179
Pixel Size	1.4um(H) x 1.4um(V)
Resolution	8 Megapixel 3264H x 2448V
Interface	30pin MIPI
FOV	Default 66 degree
Lens	EFL: 3.61mm F/NO: 2.2mm
Focus type	Auto focus
Objective Distance	60cm to infinity
Shutter type	Electronic Rolling shutter
Operating Temperature	-20° ~ +70°
Module Size	21.3*8.8 mm

PRODUCT DIMENSION



For more information relating to cameras, please send us email via sales@supertekmodule.com, or visit our website www.supertekmodule.com